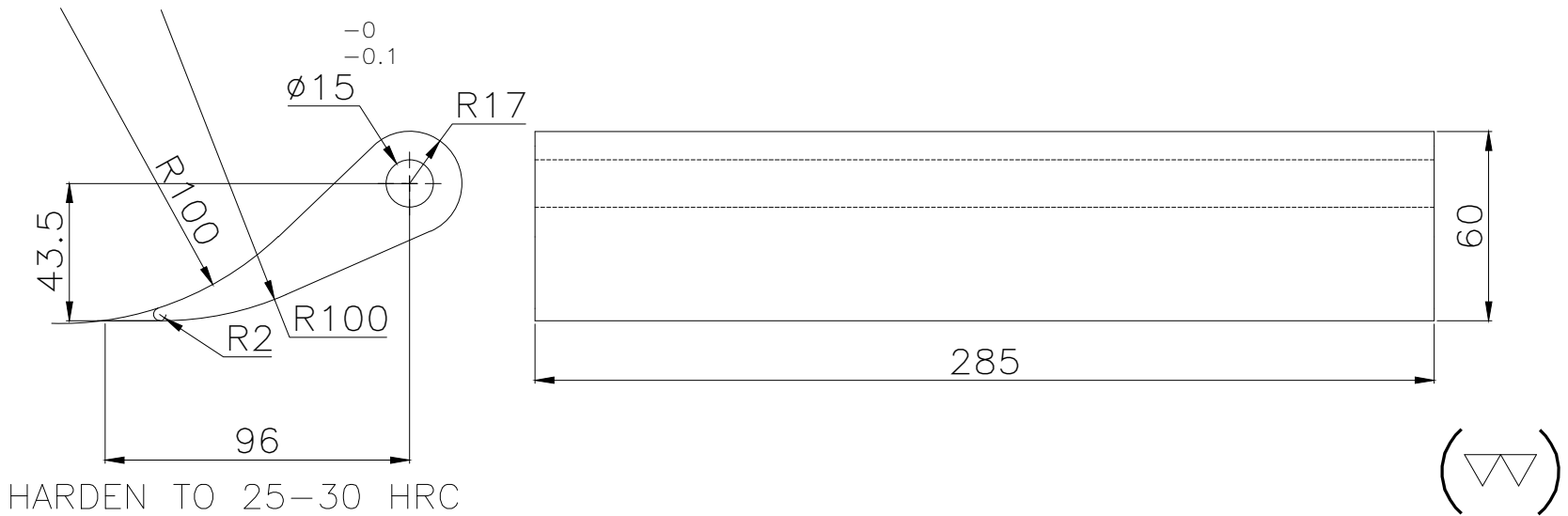


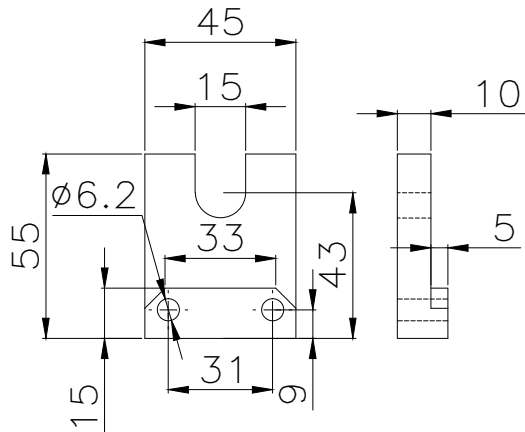
HARDEN TO 25-30 HRC



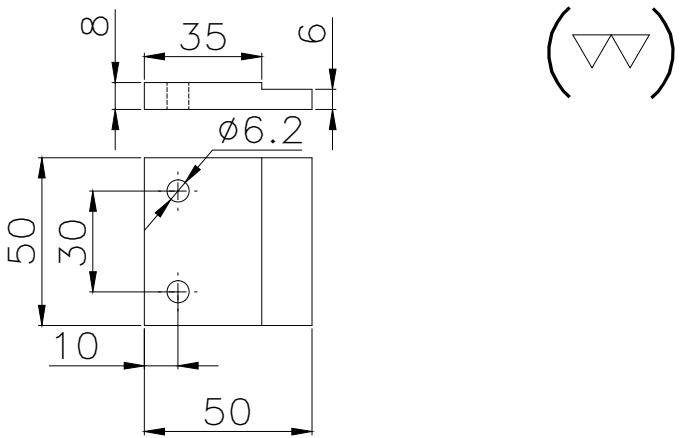
HARDEN TO 35-40 HRC



HARDEN TO 25-30 HRC



HARDEN TO 25-30 HRC



				PRODUCT	MACHINE NO.		DEPT. NO.	
					-		P1128	
				USED ON	QTY	COMPT. NO	OPT. NO	
						7651040 & 1443	-	
								WT IN Kgs
								SCALE
								NFS
AMEND	NO	SIGNATURE	DATE	TITLE				SHEET NO.
APPROVED				WELD FIXTURE FOR EJECTOR PARTITION				2
REVIEWED		V.S. HARI	16.01.2021					NO. OF SHEETS
CHECKED								2
DRAWN		DEEPAK	16.01.2021					
STD5								
				BEML LTD.		DRG. NO.		
				PALAKKAD		80-482-6-192-3		